



33 Van Tuyl Rd., Pond Eddy, NY 12770
phone: 845-557-0802 *fax:* 845-557-0803
email: hall@lumberlandpostandbeam.com
www.lumberlandpostandbeam.com



Livermore

DESCRIPTION

Relocated from Livermore, Maine this spacious barn-home has been reconstructed in the rolling hills of the Delaware River valley, just 2 hours from New York City. Fully exposed hand-hewn timbers, salvaged architectural elements, and re-claimed lumber complement an open floor-plan, heated polished concrete and wide-plank floors, and expansive windows.



ADDRESS

22 Bloom Road
Pond Eddy, NY 12770

BEDS

3-5

PRICE

859,000

BATHS

3.5

ACREAGE

3 acres

FEATURES

Internal pass-thru garage and workshop, large open-plan first floor with entertainment space and bar. Unrestricted access to 50 acres of pristine forest, streams, and pond.

GROSS AREA

4,500 square feet

TAXES

estimated 8000/yr



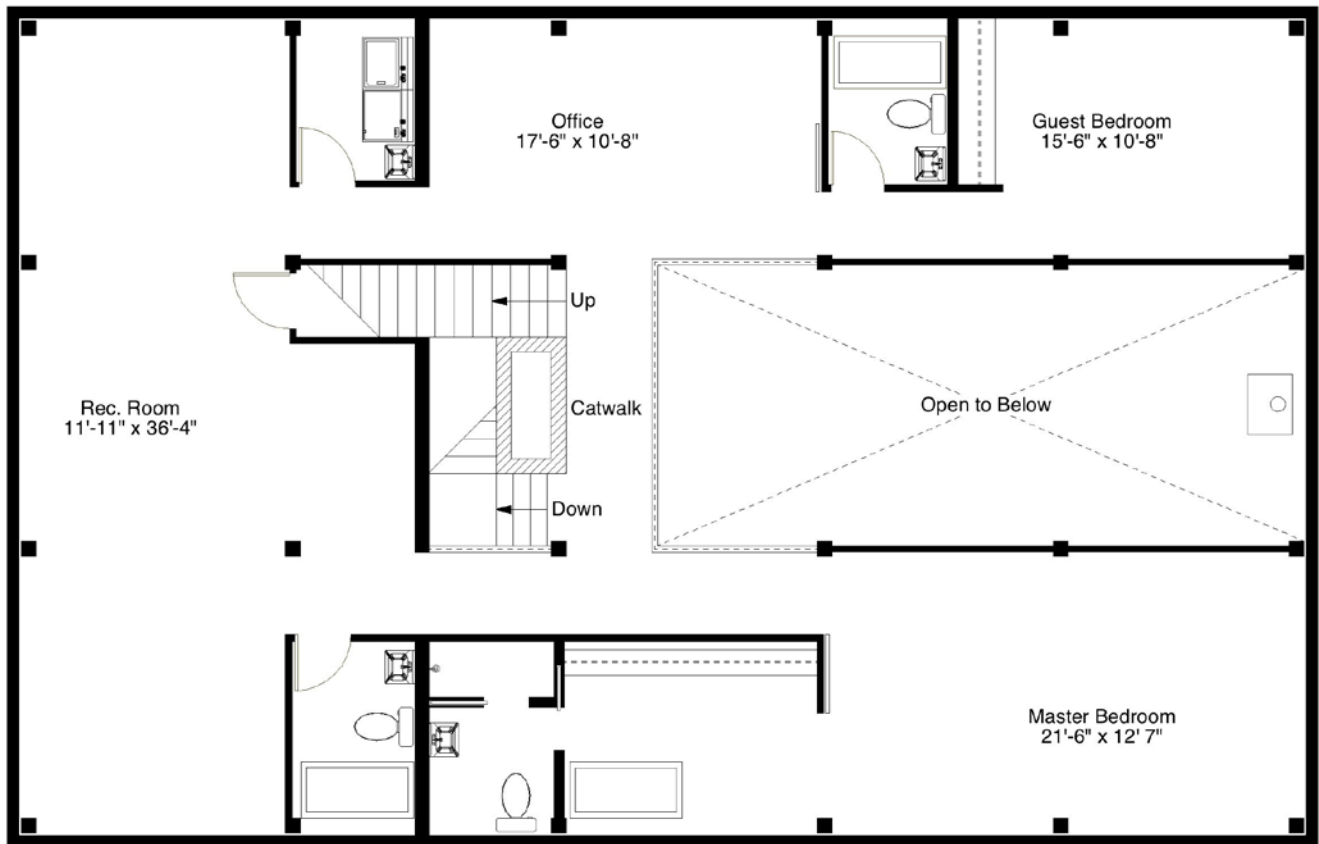


33 Van Tuyl Rd., Pond Eddy, NY 12770
phone: 845-557-0802 fax: 845-557-0803
email: hall@lumberlandpostandbeam.com
www.lumberlandpostandbeam.com





33 Van Tuyl Rd., Pond Eddy, NY 12770
phone: 845-557-0802 fax: 845-557-0803
email: hall@lumberlandpostandbeam.com
www.lumberlandpostandbeam.com

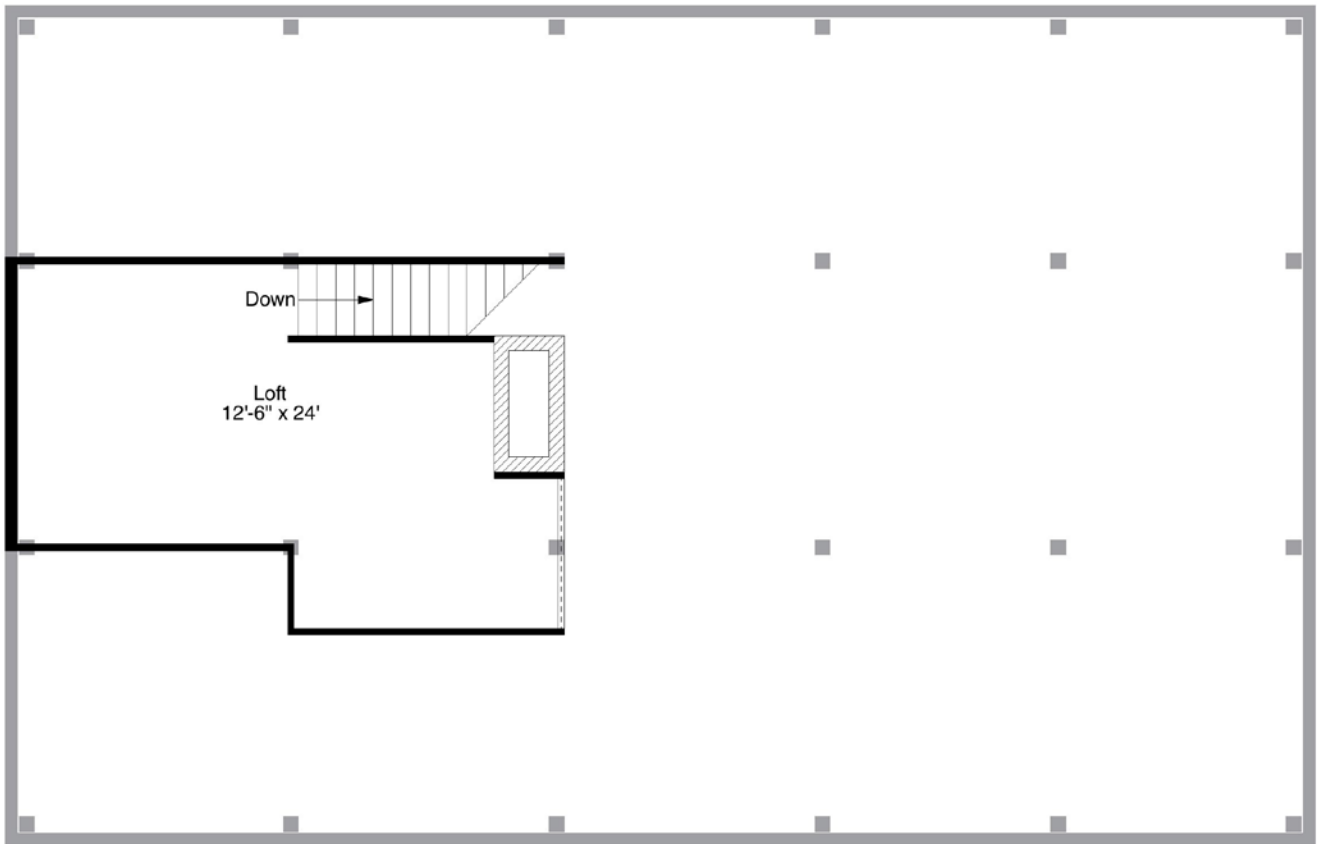


Second Floor Plan
Gross Area: 1623 Sq. Ft.

Livermore Barn
Bloom Road
Pond Eddy, New York



33 Van Tuyl Rd., Pond Eddy, NY 12770
phone: 845-557-0802 *fax:* 845-557-0803
email: hall@lumberlandpostandbeam.com
www.lumberlandpostandbeam.com



Third Floor Plan
Gross Area: 289 Sq. Ft.

Livermore Barn
Bloom Road
Pond Eddy, New York